



Architecture, Structural Engineering
and Historic Preservation Services



www.intres.com



Firm overview

Founded in 1973, Interactive Resources is a multi-disciplinary firm that offers architectural design, structural engineering, and historic preservation services to a diverse clientele, encompassing both the private and public sectors. The firm is dedicated to creating innovative design solutions for our clients, with a strong emphasis on staying up-to-date with advancements in building systems technology and sustainability.

The firm is comprised of a team of highly specialized and technically proficient architects and engineers who bring a wide range of expertise. Many of the project managers at Interactive Resources have held positions in local government, serving on city design review boards, planning commissions, and historic preservation commissions. Additionally, the firm

boasts the distinction of having a previous two-term mayor among its ranks.

Interactive Resources places a significant emphasis on thoughtful sustainable design principles and maintaining a high standard of design excellence. This approach has led to the firm being recognized with awards for its architecture, which is not only aesthetically pleasing but also cost-effective for our clients. Our overarching goal is to act as a resourceful collaborator, one who listens, learns, and takes a leadership role in projects. We achieve this through maintaining quality by ensuring principal involvement, fostering open lines of communication, paying attention to detail, adhering to well-defined budgets and schedules, and employing state-of-the-art technology throughout the duration of our projects.



Our mission

Interactive Resources has earned widespread recognition for its steadfast commitment to delivering high-quality, state-of-the-art, and sustainable developments. With a rich history of providing professional design services, the firm has contributed its expertise to a wide array of projects, including new construction, renovations, rehabilitations, adaptive reuse, and tenant improvement endeavors.

The firm's diverse project portfolio serves as a testament to its adaptability, with designs that reflect the unique visions and needs of a broad clientele. Central to our approach are several core principles. First and foremost, the firm places a strong emphasis on creating modern and functional designs that align with contemporary standards and user requirements. Secondly, our design professionals embrace a

collaborative design process that actively engages building users and fosters a sense of connection with the surrounding community, ensuring that our designs harmonize with the broader context. Lastly, Interactive Resources maintains an unwavering dedication to investing in innovative, energy-efficient, and sustainable developments, aligning our work with the vital imperatives of environmental responsibility and resource efficiency.

The firm's reputation is further enhanced by its ability to provide cost-effective, innovative design solutions and timely resolutions to building challenges. This commitment to excellence sustains long-term relationships with our clients, who have confidence that Interactive Resources can be relied upon to deliver expert design services on schedule and within budget.



Multidiscipline A/E services

Architectural Services

Pre-design
Scoping studies
Feasibility analysis
Programming
Stakeholder involvement
Purpose & needs statement
Design charrette
Architectural design
Architectural technology research
Post-construction evaluation
Existing conditions survey
Building integrated modeling
Code analysis
Space planning
Interior design
Installation observation
Furniture contract coordination
Sustainable design
LEED design
Design review
Drawings & specifications
Construction administration

Structural Engineering

Structural design
Drawings & specifications
Existing conditions survey
Seismic analysis

Historic Preservation Services

Programming & development studies
Conceptual design
Contract documents for preservation
Historic building rehabilitation
ADA compliance design
National landmark nominations
State & National Register Nominations
Historic context statements
Historic resource evaluations
Historic resource surveys
Condition surveys
Section 106 documentation
Tax credit documentation
DPR forms
Mills Act applications
Design/peer review
Historic structures reports
Historic American Building Survey documentation (HABS)
Historic American Engineering Record (HAER) documentation
CEQA cultural resource assessments
Secretary of the Interior's Standards Analysis
Environmental review & analysis
Ordinance development and historic preservation planning
Development urban design review

Specialized Services

Energy studies
Building assessment studies/reports
Program development studies (PDS)
Facility master plans
Feasibility studies
ADA Accessibility/Title 24 compliance
Building safety, code compliance
As-built/existing conditions surveys
Diagnostic & forensic testing & studies
Peer reviews/construction reviews
Expert witness services
Roof design & repair replacement
Field observation during construction
Wind uplift testing & roof core analysis
Visual inspections & condition surveys
Roofing/waterproofing failure investigations
Roofing/waterproofing design reviews
Contract documents for repair design
Roof management programs
Façade inspections & peer review
Building envelope condition assessments
Water entry & condensation studies
Repair, rehabilitation and recladding
Construction observation & troubleshooting
Testing of building components

Meet our principals and architects

Our highly trained experts work as a team to develop effective design solutions for any project, no matter how small or complex. Our work is founded on our passion for creative problem solving, combined with the deep technical expertise of veteran architects and structural engineers, who offer the ideal balance of value and experience.



Thomas Butt, FAIA, LEED AP BD+C
President / Principal Architect



Andrew Butt, AIA, LEED AP BD+C
Managing Principal / Architect



Brant Fetter, AIA, CGBP
Principal Architect

Tom has more than 55 years of experience in various aspects of architecture. Tom's specialties include historic preservation, building envelope technology and failure analysis, including expert witness services for litigation.

Tom's involvement in historic preservation underscores his dedication to preserving and restoring buildings and sites of historical significance, maintaining their cultural and architectural heritage.

Tom's proficiency in forensic and diagnostic services allows him to investigate and analyze building-related issues, particularly in the context of construction defects and failures. Tom's diverse skill set, extensive experience, and commitment to technical excellence make him a recognized expert in the field of architecture.

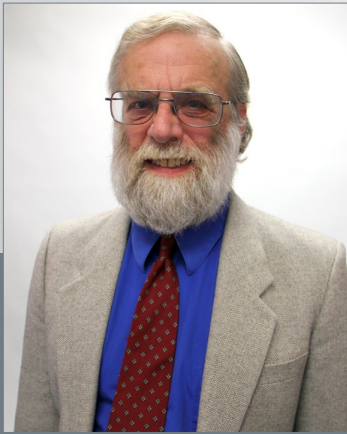
Andrew is the Managing Principal and Director of Design at Interactive Resources. With more than 27 years of project management experience, Andrew focuses on establishing strong communication and trust between the design team and his clients.

Andrew's leadership brings together his extensive experience, technical expertise, and a strong focus on sustainable design. His hands-on approach to project management, combined with his passion for creating healthy and high-performing spaces, positions him as a valuable asset in ensuring the success of each project undertaken by the firm.

Andrew served as planning commissioner for the Cities of El Cerrito and Richmond. He chaired the Richmond Design Review Board and El Cerrito Planning Commission.

Brant Fetter is a highly experienced architect with a career spanning more than 28 years. Brant has actively contributed to his community's built environment. His prior membership on the City of Richmond's Design Review Board highlights his dedication to shaping the architectural landscape of the area.

One of Brant's notable strengths is his exceptional project management skills. His ability to oversee and coordinate multidisciplinary design teams is an asset in ensuring the successful execution of complex projects. Brant is a highly valuable professional in the architectural and construction industry. His diverse portfolio of project types and his dedication to environmentally responsible design align with contemporary architectural and environmental priorities.



Edward Anisman, AIA, LEED AP
Principal Architect

Ed is a principal architect at Interactive Resources and has been with the firm for 46 years. Ed's technical expertise extends to critical areas such as the building envelope, roofing, and weatherproofing. These aspects are fundamental to the durability and performance of buildings.

Ed has a reputation for outstanding design services with a strong technical background to promote efficiency in aesthetics, operations and costs. He is involved with all phases of new construction and alteration projects, facility condition assessments, feasibility studies, envelope and roof assessments.

Ed studies Yiddish, as well as the violin, and serves on the board for KlezCalifornia, a nonprofit organization that celebrates Yiddish culture and music.

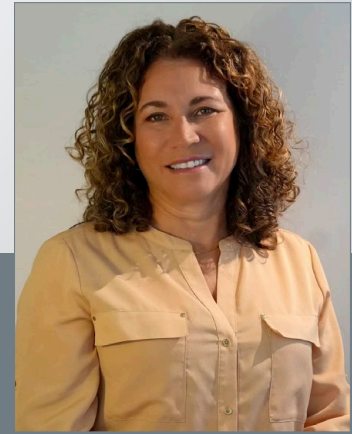


Chris Lutjen, AIA, LEED AP BD+C
Architect

Chris brings over 20 years of experience in design and project management of a wide variety of building and project types, including historic, civic, academic, commercial, and retail. He has experience working on many significant, historic landmarks throughout California.

An enthusiastic and passionate architect registered in California, Chris is inspired by the craft of both historic and modern buildings. He has a strong, core belief in social justice and buildings that respect our shared ecology.

Chris has been a LEED Accredited Professional for 20 years and sees all projects through the lens of sustainability. He has a passion for integrated design and enjoys leading large teams through the design and construction of technically complex buildings.



Carolina Mindiola, LEED AP
Project Manager

Carolina Mindiola is a highly experienced professional with more than two decades of expertise in the architecture and construction industry.

She has led projects from their initial conception through to completion, showcasing her ability to manage and guide projects at every stage, from planning to opening day. She has studied architecture both in Venezuela and the United States, which provides her with a global perspective and a diverse range of architectural influences.

Carolina's extensive and versatile experience, coupled with her LEED accreditation and language proficiency, positions her as a valuable professional in the architecture and construction industry.

Our project designers and drafters

Our multi-discipline staff includes many architects supported by specialists in historic preservation, forensic diagnostic and investigative services, roofing and waterproofing, building envelope, building code analysis and compliance, computer drafting, ADA accessibility compliance, and sustainable design.



Mike Tran, Assoc. AIA
Sr. Designer / Drafter



Sabrina Richter, Assoc. AIA
Project Designer



Ankita Thukral
Designer / Drafter

Mike possesses 37 years of CAD drafting experience, showcasing exceptional efficiency and a natural talent for design and drafting. His responsibilities encompass a wide range of tasks, including the production of site plans, elevation drawings, floor plans, section illustrations, and construction documents. He also conducts site observation and inspection services.

Mike plays a pivotal role in knowledge transfer by instructing personnel on the latest CAD techniques and software advancements, and he provides valuable support in computer management and maintenance.

Mike's skills extend to creating 3D Building Information Management (BIM) models using Autodesk Revit, adding a vital dimension to our design and drafting capabilities.

Sabrina Richter is a project designer adept at creating innovative and environmentally sensitive buildings spanning a wide variety of project types. She specializes in projects that build cultures of community, for clients including the City of San Carlos, YMCA, and UC Berkeley.

Since joining Interactive Resources in 2016, she has worked in teams across the firm, from research and development to architecture and construction administration. Sabrina excels in crafting imaginative design concepts, drafting design documents, and executing completed visions that exceed clients' expectations. She is well-versed in every aspect of the design process, including presentation graphics, computer drafting, 3D modeling, rendering, drawing sets, and material selection.

Ankita is a designer who is passionate about building design, drafting and modeling. She joined the firm in 2023 and believes in responding to the needs of the community and socio-cultural challenges through architectural spaces. Ankita brings advanced skills in Autodesk CAD, Adobe Suite, QGIS and many other programs to our architectural design team.

Ankita recently received her Master of Science in Architecture and Urban Design from UCLA and her Bachelor of Architecture from the Sushant School of Art and Architecture in India. Ankita is fluent in English, Hindi and Punjabi.



Clayton Young, Assoc. AIA
Designer / Drafter

Clayton Young, a recent addition to the Interactive Resources team in 2022. He is originally from Melbourne, Australia. He is a highly skilled design professional and an integral part of the architectural production team. His responsibilities encompass a wide spectrum, involving the creation of renderings, site plans, elevation drawings, floor plans, and construction documents for projects spanning both the public agency and private sector.

Clayton's engagement in his role is comprehensive, delving into various facets of his craft. His proficiency extends to Building Information Management (BIM) 3D models using Autodesk Revit, further enhancing the firm's capabilities in design and documentation.

Client testimonials



Tom is always good with his project delivery, and dedicates his personal time to each issue. My high expectations were met. Quality plans and specifications and expedient reviews of substitutions.

– Mike Haas, AC Transit



Ed Anisman and his team did an excellent job. More important, he always exhibited care/concern that his team was providing expected services. We were fortunate on this project. Ed saw to it that no significant issues arose. It was a very clean project execution

– Rick Penska, Santa Clara County



McMorgan has had a long and productive relationship with Interactive Resources working on complex development projects for our mutual clients. We have found Interactive resources to be responsive, creative and diligent in meeting time lines, interaction with city agencies, contractors and other team members on our assignments.

– Mark Taylor, McMorgan & Company, LLC



Very professional, provided timely responses, and quality of engineering work met expectations. Unforeseen site conditions were handled efficiently and effectively. Overall, a very pleasant experience working with the team from Interactive Resources and would gladly have them as an A/E on projects in the future.

– Christian Pascual, General Services Administration



Interactive Resources is and has been an excellent architectural contractor for GSA on the Region 9 IDIQ for AE Services contract. For this particular Task Order, they responded to an ARRA requirement in a timely, efficient manner, with excellent end designs, and under tremendous time constraints. They were outstanding in all respects. I highly recommend the company for future IDIQ consideration.

– Daniel Makowski, General Services Administration

Client testimonials



I want to compliment and commend Brant Fetter for the architectural concept design of the AC Transit's new Customer Service Center. Brant is a very talented individual and this design is fabulous. I just want to give credit where credit is due.

– Mike Haas, AC Transit



Many thanks again for the beautiful work on the City Hall. Everyone that sees it ... loves it. You were the right firm for the job.

– Jeanne MacLeamy, Former Mayor



Interactive Resources was selected by the City of Novato as the architect for the renovation of the City Hall, which was originally built in 1896....The result has been a renovation that is admired by all who see the building. The Interactive Resources Team was easy to work with and responsive to the City's needs. Based on my experience with Interactive Resources, I can definitely recommend them for your new facility.

– Jennifer Goldfinger, City of Novato



Interactive Resources has been involved with several projects at UC Berkeley and is well regarded by Capital Projects.

– John Fiske, University of California, Berkeley



Over many years, even before coming to DGS, I have had the opportunity to work with Interactive Resources, specifically Tom Butt and various teams he puts together and have been part of. I've always been impressed and never disappointed. Everyone did a great job on this project, and helped lead us to learn more than I saw coming on this one.

People forget how complex these building systems can be. I'm grateful we have folks like Tom that we can turn to too help sort things out and make things safe once more.

– Chris Porter, Office Building Manager III, DGS, FMD



Master Planning

Interactive Resources offers facility master planning services for public and private clients. We conduct extensive client and stakeholder interviews to determine current and future space needs. Complete details of all interviews and recommendations involved in planning are included in a comprehensive report, which also may include cost estimates for individual and department components and recommendations for prioritizing and phasing implementations of the master plan. The firm also provides program development, feasibility and tenant realignment studies.

As part of this process, the firm provides computer generated drawings of existing facilities, an inventory database, furniture and finish standards, and alternative facility reorganization plans. We also provide computer generated renderings and Building Information Models (BIM) models.

Featured Projects Photo Legend

1. Nystrom Elementary School & Campus
2. City of Merced Corporation Yard
3. Point Richmond Tech Center I
4. Richmond PG&E Service Yard
5. Elmwood Correctional Facility Service Model Operational Planning
6. Woodrow Wilson Elementary School Modernization
7. Contra Costa County Government Corporation Yard
8. PowerPlant
9. Nystrom Elementary School





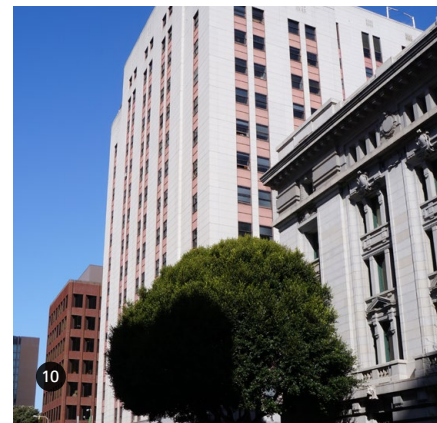
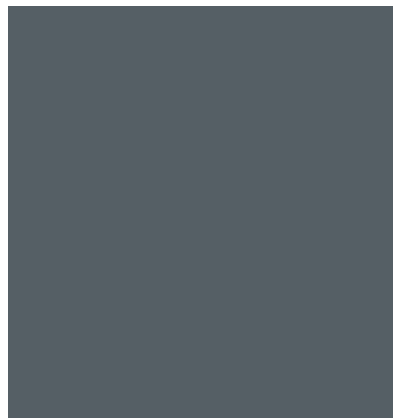
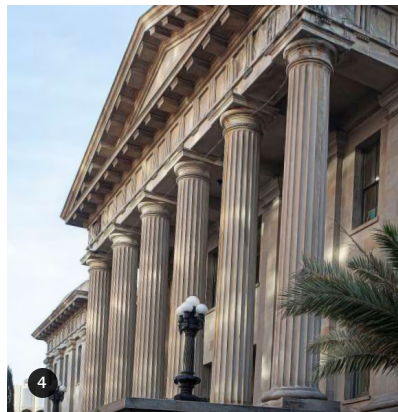
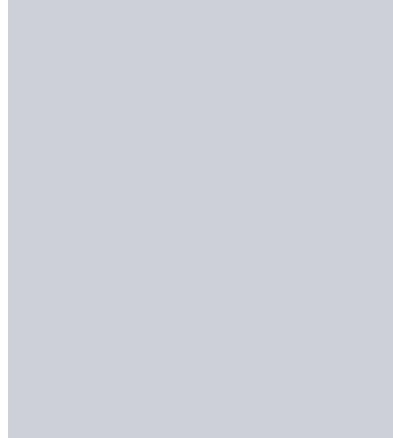
Programming

Interactive Resources has extensive experience in the programming of new and existing facilities. The key to successful programming is involvement from the onset of the project, and through a series of meetings and site visits, we document and evaluate the present building and/or site conditions, as well as discuss current and future needs and technological advances.

We also look at how the structural, mechanical and other building utility systems, properly planned today, can accommodate future growth and change. We work closely with the owners and end users to understand and develop the programmatic, spatial, functional and aesthetic requirements for the tenant space. We focus on energy-saving design strategies, code compliance and minimizing costs. This information gathering, analysis and program development process helps us and the client, to determine the best course of action to meet project goals and ultimately forms the foundation upon which we build the design.

Featured Projects Photo Legend

1. Foley Federal Building
2. Edward J. Schwartz Federal Building
3. 30 & 40 Muir Road Bridging Design
4. Old San Francisco Mint Building
5. Los Angeles Federal Building
6. Prince Jonah Kuhio Kalanianaʻole Federal Building
7. 50 United Nations Plaza
8. Los Angeles Federal Building
9. James C. Corman Federal Building
10. Appraiser's Building





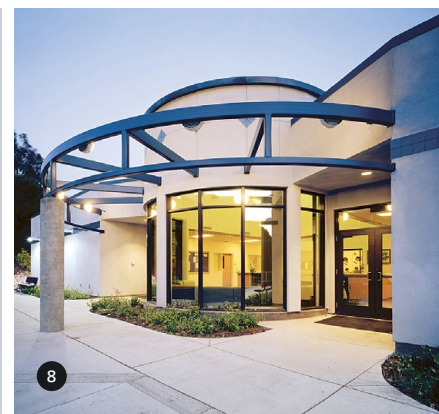
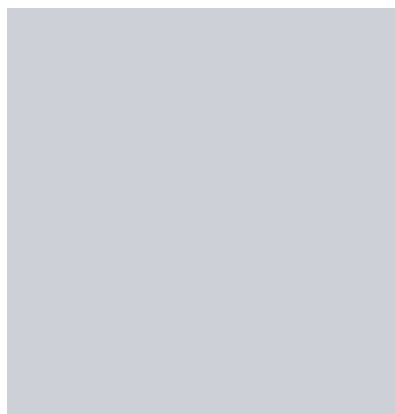
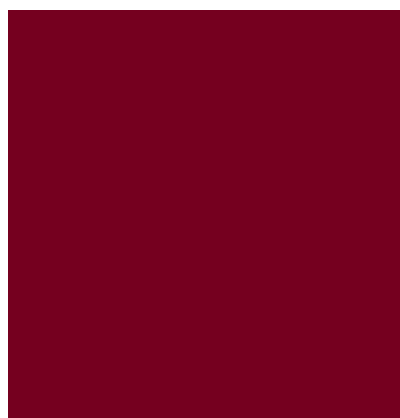
Architecture

As architectural designers, one of our primary objectives is to design buildings that meet the distinctive goals and needs of each client. As a result, our projects display diverse design statements reflecting our varied clientele. Our designs are grounded on several principles—to create modern and functional designs that comprehend our clients' program and vision—to foster a collaborative design process that makes connections between the building users and the community—and to apply a sustainable design ethic that starts with the notion that buildings can be self-sufficient and even enhance their ecological networks.

Our goal is to create buildings that are down-to-earth but not ordinary. Aesthetics and sustainability are given equal weight; forms are straightforward, materials are clearly expressed, and our designs have evolved toward buildings that are both functionally and aesthetically durable.

Featured Projects Photo Legend

1. Contra Costa College, Student Services Center Lobby
2. Nystrom Elementary School Multipurpose Building
3. Point Richmond Tech Center I
4. Baltic Square Development Back Entrance
5. Baltic Square Development
6. 7 Stars Healing Center
7. Washington Elementary School Modernization
8. Early Childcare Center, Contra Costa College
9. Children's Mental Health Program
10. Contra Costa College, Student Services Center





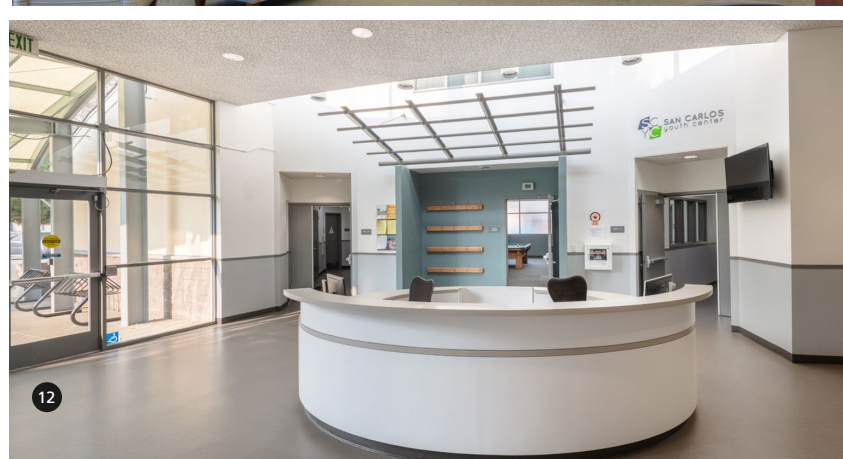
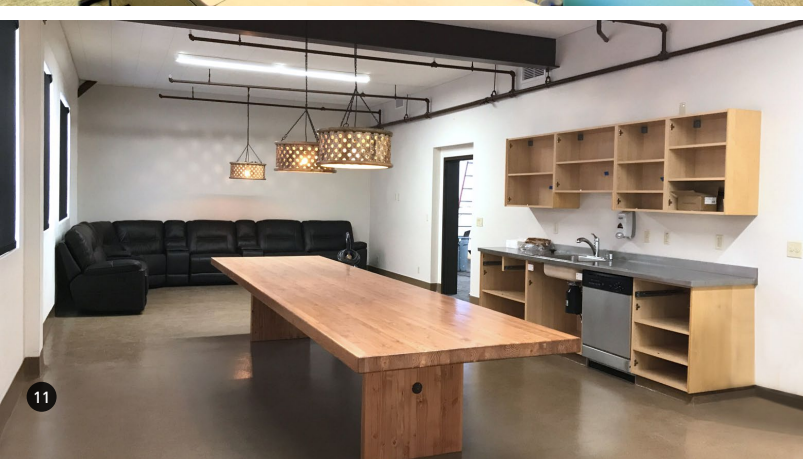
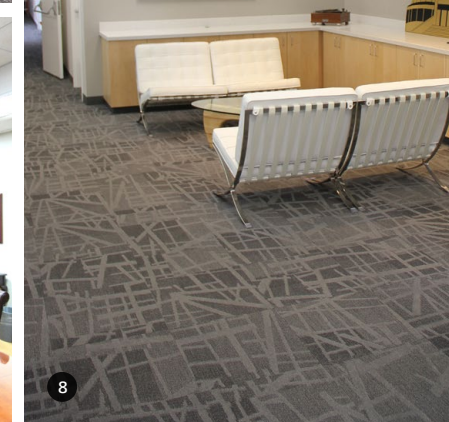
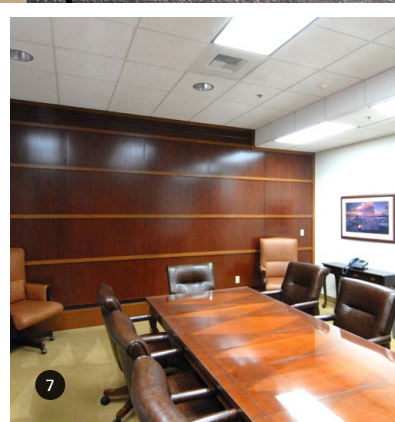
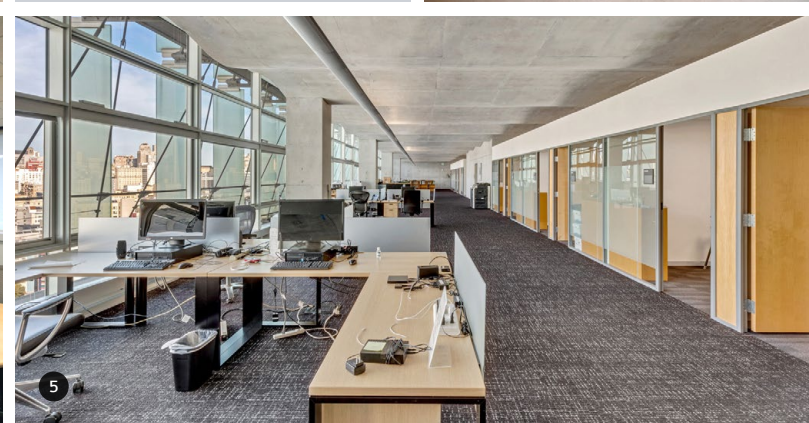
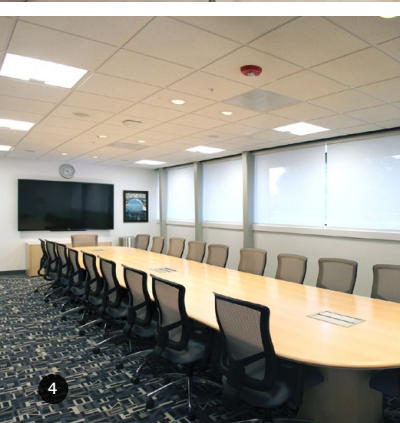
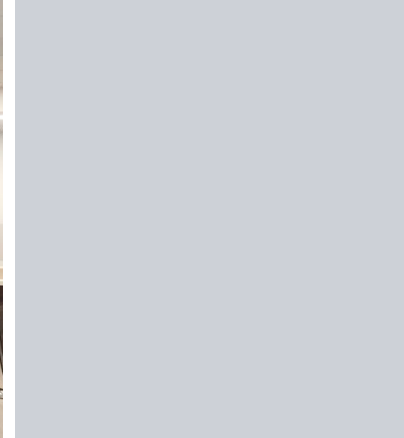
Rehabilitations / Renovations

Interactive Resources has provided A/E services on hundreds of renovations and rehabilitations for existing structures. We treat each and every tenant improvement and remodel project with the highest level of attention to detail. Our commercial tenant improvement services are a process that begins with understanding our clients' business needs to help them identify and design the building improvements essential for their success, as building owners recognize the need to upgrade their facilities for building longevity, safety, energy conservation, new tenants and program changes.

Often times during the renovation, other issues can arise, and we are called upon by our clients to provide waterproofing, weatherization, roof design and building envelope upgrades.

Featured Projects Photo Legend

1. Alten Construction Office
2. PG&E Customer Service Office, San Rafael
3. PG&E Customer Service Office, Hollister
4. PG&E Applied Technology Center
5. Federal Trade Commission, San Francisco
6. PG&E Customer Service Center, San Rafael
7. Bruce R. Thompson U.S. Courthouse 5th floor Chamber
8. PG&E Applied Technology Center Common Area
9. 825 Alfred Nobel Drive, Hercules
10. Peckham Federal Building, Judge's Chamber
11. Alten Construction Office Break Room
12. San Carlos Youth Center Lobby





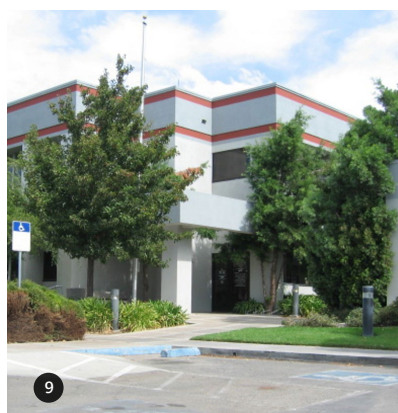
ADA Accessibility

Interactive Resources has worked on more than 500 ADA accessibility projects with a variety of organizations, from private universities to the U.S. General Services Administration and the U.S. Department of Justice. We have provided building inspection and evaluation services for more than ten federal buildings ranging in size from 86,000 to 1,000,000 square feet. We have extensive experience with accessibility surveys, identifying architectural barriers, and recommending and designing repair solutions with construction cost estimates.

Our projects have included an accessibility survey of the Stanford University campus; Sacramento Regional Transit District's administrative buildings and bus maintenance and servicing facilities; dozens of Bank of America retail facilities; a variety of Kaiser Permanente facilities; as well as more than 190 sites across the state of California for Pacific Gas & Electric Company.

Featured Projects Photo Legend

1. Stanford University
2. Agnews State Hospital
3. North Pointe Technology Center II, Concord
4. PG&E Accessibility Parking Canopy, San Francisco
5. PG&E Customer Service Office, Fort Bragg
6. Orin Allen Youth Rehabilitation Facility
7. 50 Douglas Drive
8. Kaiser Permanente, San Rafael
9. Kaiser Permanente, Manteca
10. Kaiser Permanente, Walnut Creek
11. Kaiser Permanente, Napa-Solano





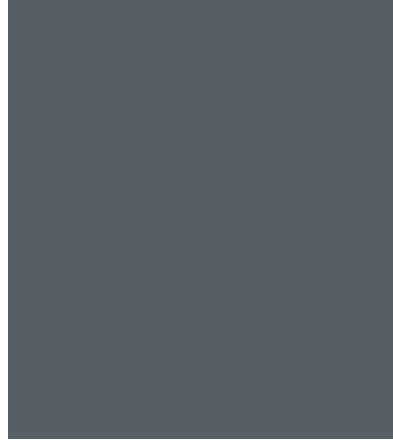
Historic Preservation

Interactive Resources has a long and successful practice of providing historical preservation services. We have designed and overseen the construction of hundreds of historical projects completed in compliance with the Secretary of the Interior's Standards and employing the California Historical Building Code. Our historical projects range from complete restorations and rehabilitations to compatible additions and reconstructions. We are well versed in investigating existing conditions, material and envelope failures, and accessibility and code compliance and have an excellent record of finding creative and historically sensitive solutions to building deficiencies.

Additionally, we are well known for our expertise in all issues regarding historic evaluations for compliance with the California Environmental Quality Act. Our firm has extensive experience with archaic material remediation and restoration. Our approach is to use the gentlest means possible to restore building functionality while maintaining its historical integrity.

Featured Projects Photo Legend

1. Coit Tower Rehabilitation
2. East Brother Light Station Rehabilitation
3. Benicia Clock Tower Rehabilitation
4. Suisun-Fairfield Train Station Rehabilitation
5. Faria House Rehabilitation
6. First United Methodist Church, Napa
7. Santa Fe Reading Room "Trainmaster's Building" Rehabilitation
8. Nystrom Elementary School Rehabilitation
9. Novato City Hall Rehabilitation





Sustainable Design

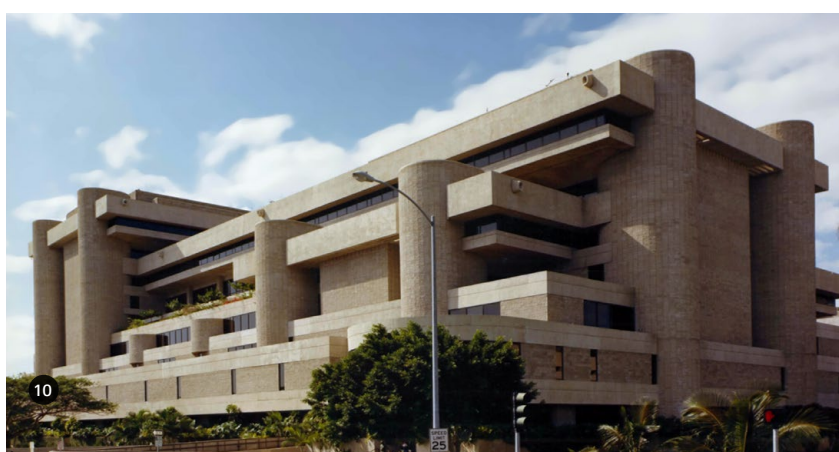
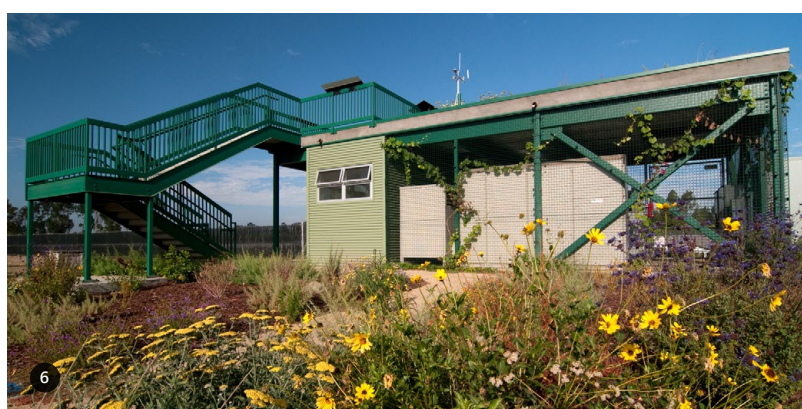
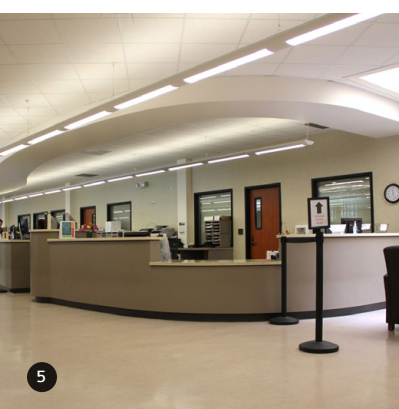
At Interactive Resources, we have a strong commitment to and history of incorporating sustainable design and energy efficiency into our projects. We have completed projects that are LEED Silver and Gold certified. Our firm has several architects who are LEED® Accredited Professionals. We are also members of the U.S. Green Building Council.

We design our buildings to take advantage of natural light and ventilation while minimizing reliance on imported energy and water. This leads to building systems that are smaller, more efficient, and less complex. We prefer to use readily available regional resources, minimizing energy use, carbon emissions, and impacts on habitats and human health.

We design spaces that can be reconfigured for new uses over the life of the building and have in-depth knowledge of green building materials that are environmentally friendly, durable and easy to maintain. Buildings that last, age well and are loved by their communities are, without question, more sustainable. The photos shown represent remodels, new construction and federal building program development studies for alteration projects.

Featured Projects Photo Legend

1. Limoneira Solar Farm
2. Los Angeles Cafeteria
3. Los Angeles Cafeteria Seating Area
4. 30 & 40 Muir Drive Bridging Design
5. 30 & 40 Muir Drive Interior
6. Limoneira Solar Farm Visitor Center
7. Appraiser's Building 9th Floor Core/Shell & 9th Floor
8. Ronald V. Dellums Federal Building, Social Security Administration
9. 50 United Nations Federal Building Program Development Study for Alterations
10. Prince Jonah Kalanianaʻole Federal Building Program Development Study for Alterations





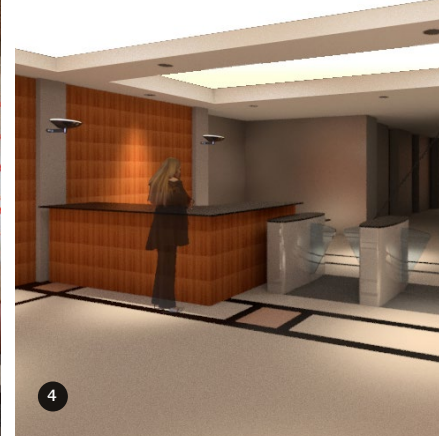
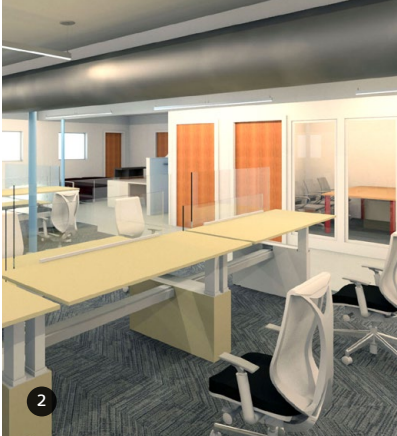
Building Information Modeling (BIM)

Interactive Resources uses the latest version of Autodesk Revit for Building Information Modeling (BIM), because of its realistic presentation. BIM allows the project's design to be interpreted easily, and facilitates coordination of architecture and engineering documentation, which helps reduce time and capital expenditures during construction. Quality sustainable design requires an understanding of how a building will perform after it's built, which in turn requires computer-based simulation software for rigorous building analysis.

BIM offers even greater opportunities for building analysis by pairing the analysis software and BIM for the seamless assessment of building performance, and more detailed and accurate energy and daylighting modeling offered by this platform. BIM technology can support the building's learning objectives and sustainable goals by providing specific data for ongoing maintenance and operations.

Featured Projects Photo Legend

1. Blooming Organics Dispensary
2. Pegasus Solar
3. FAA Cafe Seating Area
4. PG&E Town Center Turnstiles
5. Point Pinole Service Yard
6. Blooming Organics Dispensary
7. Dumbarton Quarry Service Center
8. PowerPlant Park
9. 7 Stars Healing Center
10. AC Transit Customer Service Center
11. Washington School Solar Carport Array
12. Don Pedro Recreation Agency Visitor Center





Design and Construction Peer Review

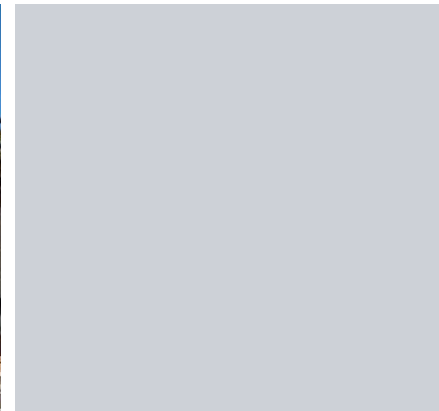
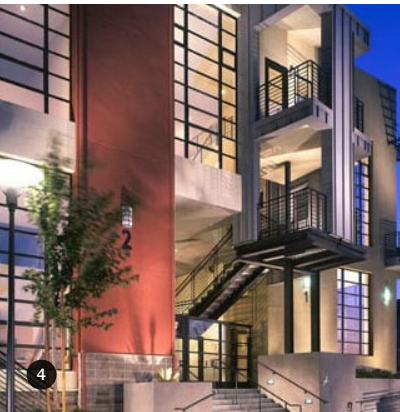
We provide design review services for both private and public agencies. Our staff is well-versed in zoning ordinances and entitlement requirements for multiple jurisdictions, and many of our personnel have served on design review boards and planning commissions.

For city agencies, we follow their strict guidelines and specific project requirements during our evaluations of the project review process, from initial submittal to final review. Once this process is complete, we can recommend approval for the design application that delivers a design solution that satisfies the municipalities' land use intent and the creativity of the designer.

Our construction peer reviews can be limited to a single component or system, such as an architectural evaluation of the building envelope weatherproofing design. Other times, they may encompass the entire building and include the review services of each discipline within the design team.

Featured Projects Photo Legend

1. Paragon, Fremont
2. Camino Ricardo
3. Altaire, Palo Alto
4. Markethouse Lofts, San Jose
5. Rancho Laguna
6. Meridian at the Crossings, San Bruno
7. 888 San Mateo
8. The Plaza at Triton Park, Foster City
9. Township Apartments, Redwood City
10. 555 Mission Rock, San Francisco





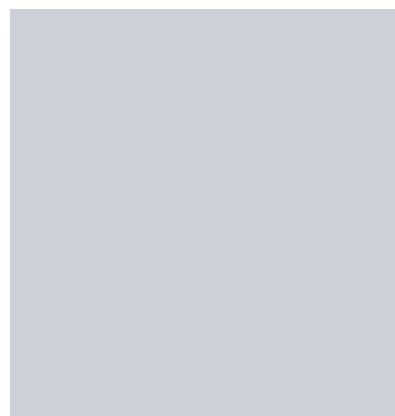
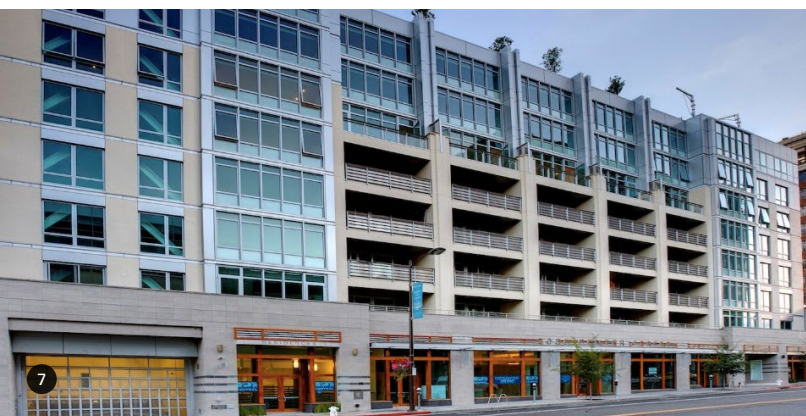
Facility Condition Assessments (FCA)

At Interactive Resources, we assess the physical condition of the facility and building components, and their estimated useful life, as well as the cost estimates associated with maintenance and capital repairs. Our FCA process results in a thorough report that includes deficiencies and corrections, which then will determine the deferred maintenance costs.

A FCA typically includes the analysis, inspection and evaluation to collect baseline data, which includes: architectural, structural, mechanical, plumbing, electrical, civil and site development (pavements, entrances, sidewalks and parking garages); utilities; ADA accessibility and TDLR compliance; environmental; vertical conveyance and elevators; landscape and irrigation systems; waterproofing systems for walls, slabs, masonry, concrete and wood; roof systems; interior finishes; fireproofing and sprinkler systems; fixtures and equipment; asbestos, hazardous materials and industrial hygiene.

Featured Projects Photo Legend

1. The Metropolitan, San Mateo
2. Santa Clara County Probation Office
3. City of Healdsburg
4. Thomas Berkley Square
5. Sunnyvale Community Center
6. Stownestown Apartments
7. Arpeggio, Berkeley
8. East Bay Regional Park District's Mckay Avenue, Alameda
9. Marin Center, San Rafael





Structural Engineering

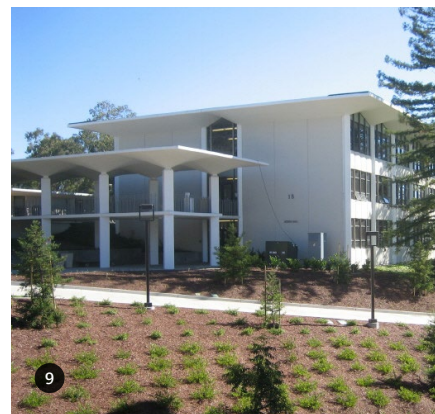
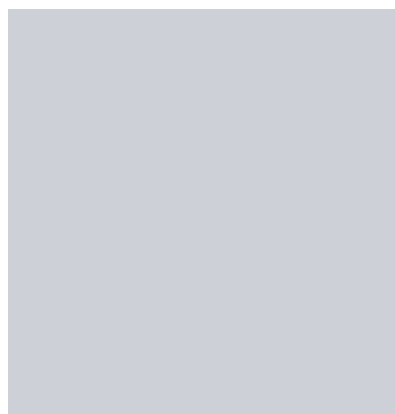
The firm provides comprehensive structural engineering services for the design of new facilities, as well as for rehabilitation and renovation projects, including historic structures. Since the firm's inception, we have performed hundreds of seismic evaluations and design upgrades on public and private buildings, and have gained a comprehensive knowledge of the specific safety requirements of the State of California.

We provide services to developers, architects and owners in both the public and private sectors, and have substantial design experience with timber, steel, masonry and concrete. Our projects include office buildings, institutional and educational facilities, multi-unit and single-family residential buildings, churches, hospitals, commercial facilities, industrial buildings, train depots, and retaining walls.

Our structural engineers can assist owners of soft-story buildings navigate their way through local ordinances and provide compliance quickly and cost effectively. Our services include soft-story building evaluations, seismic analysis and retrofitting, structural construction documents and calculations, as well as construction administration services.

Featured Projects Photo Legend

1. Vallejo Fire Station Awning
2. Student Services Center
3. Vallejo Fire Station
4. Nystrom Elementary School Multipurpose Building
5. PG&E Service Center Maintenance Canopy
6. Southern Marin Public Safety Building
7. Novato City Hall
8. Stag's Leap Wine Cave Entry
9. San Mateo Community College Building 18
10. Santa Rosa Veterans Memorial Auditorium
11. Napa First United Methodist Church





Forensic A/E & Diagnostic Services

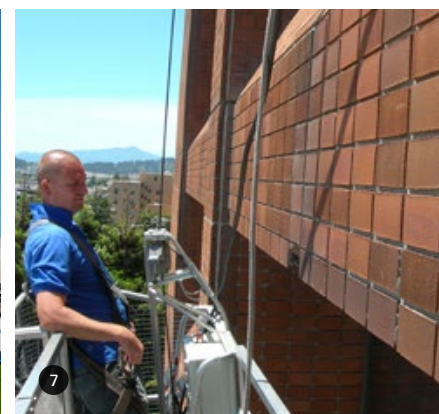
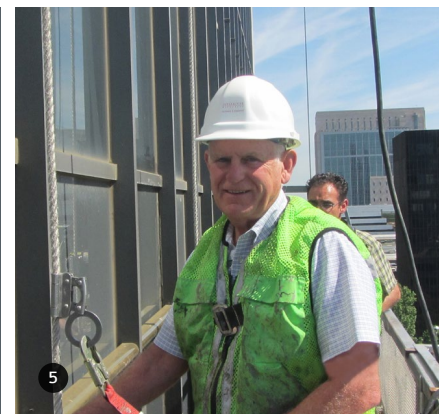
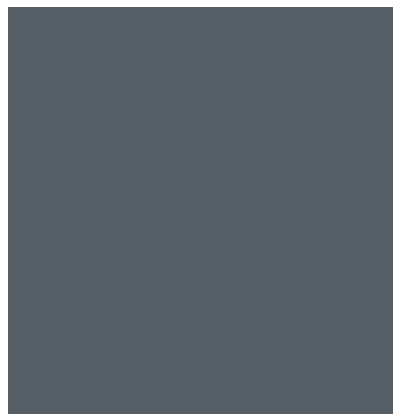
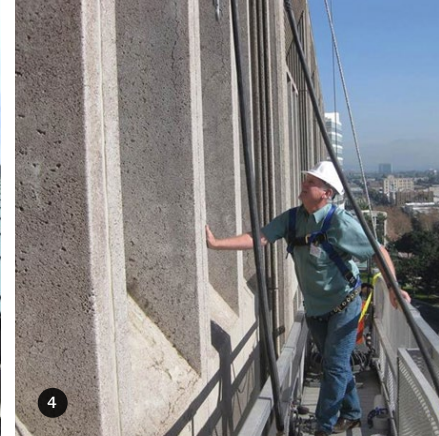
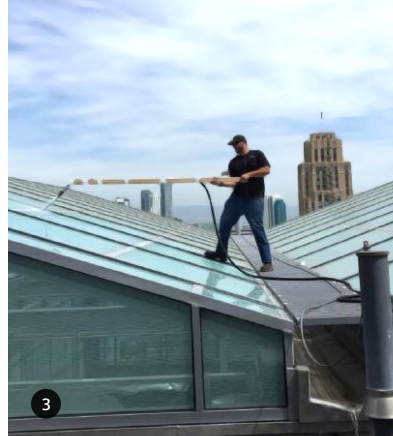
Interactive Resources has specialized expertise in the investigation and repair of construction defects, water intrusion, building failures, deterioration of building components (decks, roofs, windows and doors), building safety code compliance, building maintenance, and seismic risk analysis.

Through our investigations we trace the history of the problems, determine the cause, recommend solutions, and provide technical documents, reports, as well as schematic design, construction documents and cost estimates for the repairs.

Although not all construction defects or negligence claims result in litigation, many do. Our staff is trained and experienced at providing technical support to legal counsel to assist in productive settlement negotiations, or to prevail at a court trial or arbitration.

Featured Projects Photo Legend

1. Gregory Bateson Building Envelope
2. Frank Hagel Federal Building Plaza Repairs
3. Ronald M. George State Office Complex Skylights
4. Santa Ana Federal Building Façade
5. Board of Equalization Spandrel Glass
6. UC Berkeley University Hall Envelope
7. Frank Hagel Federal Building Brick Veneer
8. Food & Agriculture Lab Envelope
9. 801 & 851 Traeger Envelope
10. AC Transit General Office Weatherization





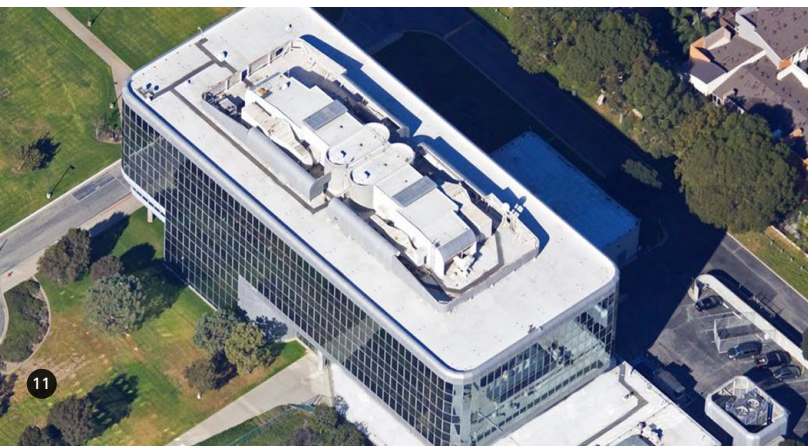
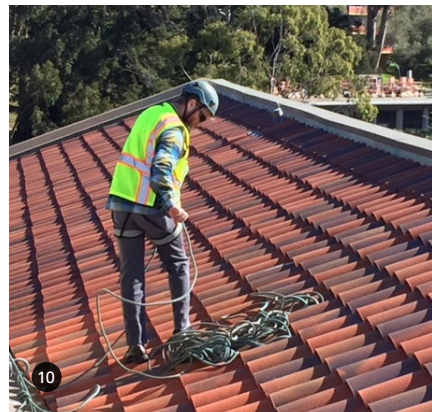
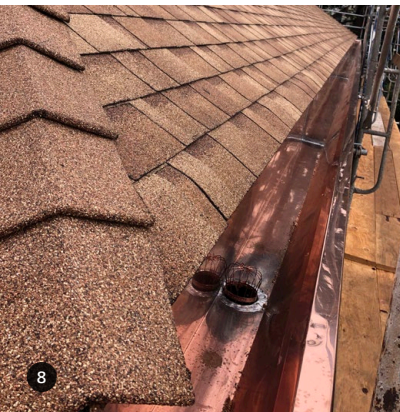
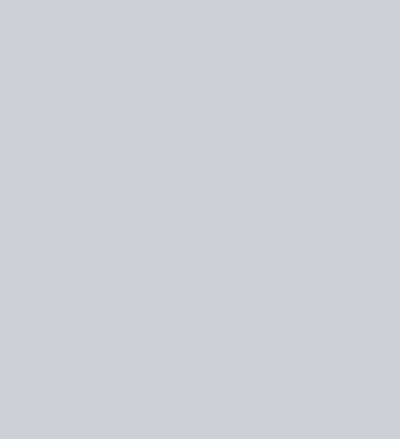
Roof Design

Interactive Resources has in-depth technical knowledge of roofing design and systems. We design and specify a wide-range of roofing systems and related components for new buildings and major renovation projects, including evaluation, construction documentation and contract administration services. Our firm is often selected for challenging re-roofing projects where innovative solutions are required to correct design and/or construction deficiencies found in the original construction.

Our goal is to provide comprehensive investigation, analysis, and to make recommendations for repairs or new design, and to provide the highest-quality construction documents aimed at optimizing benefits and affordability of any required roof work.

Featured Projects Photo Legend

1. Novato City Hall Solar Roof Shingles
2. Davidson Middle School
3. Mendocino County Administration Center
4. AC Transit Training Education Center
5. Northern California Carpenters Regional Council
6. Delta Diablo Plant Operations Facility
7. Delta Diablo Treatment Plant
8. UC Berkeley Women's Faculty Club
9. Contra Costa College Applied Technology Building
10. UC Berkeley Davis Hall
11. Hawthorne Federal Building
12. Franchise Tax Board Sacramento and San Francisco Building





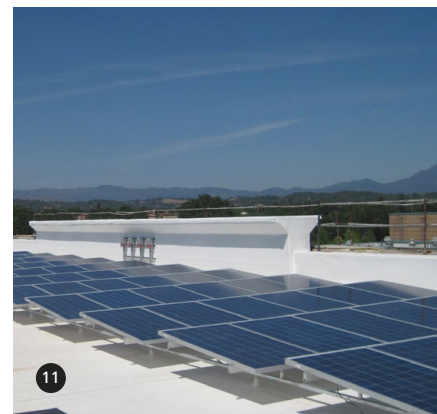
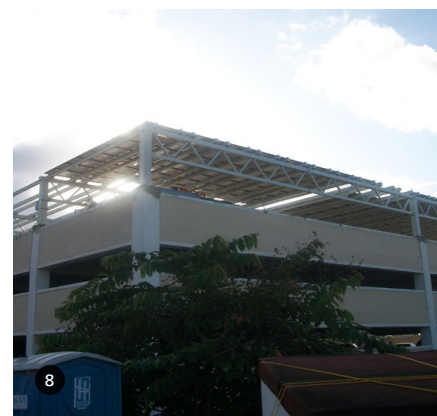
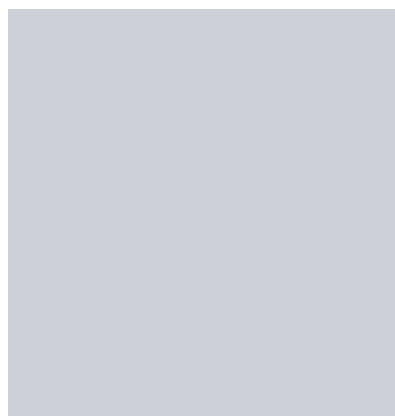
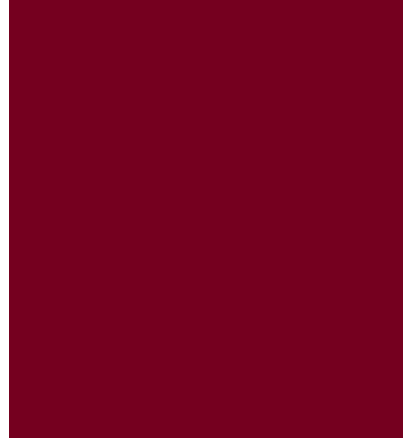
Solar Industry Design Services

Interactive Resources provides a full range of services for solar photovoltaic array design and construction. Typically, the permitting authority having jurisdiction requires structural design indicating that the existing structure is adequate to resist gravity, wind and seismic loads resulting from the installation of the array, including connections to the existing structure. A related challenge is providing a mounting strategy that provides adequate structural attachment without penetrating the roof membrane, or providing a penetration design that will preserve the integrity of the roof membrane. Solar energy construction industry services include:

- Structural engineering and calculations
- Racking design and report review
- Public agency permits and entitlements
- Array foundation, inverter anchorage, equipment pads, array racking and inverter shade structure design
- Roofing and waterproofing consultation
- Design of ancillary facilities and structures;
- LEED® and sustainable design
- Product development assistance
- Existing facility rapid evaluation
- Architectural rendering design
- Ballast design tools assistance

Featured Projects Photo Legend

1. Live Oak Large Ground Mount (*photo by Sunlink*)
2. Brown Valley Energy Storage
3. Vista Irrigation District (*photo by Borrego Solar*)
4. Emerson School
5. Tiburon Romberg Solar Carport
6. Limoneira Solar Farm
7. Temecula Garage Carport
8. San Juan Puerto Rico VA Carport
9. Harris Stratex (*photo by Solarcraft*)
10. Sybac Honduras (*photo by Sunlink*)
11. Windsor High School (*photo by Solarcraft*)
12. Luning Solar Array
13. San Francisco Terminal 3 (*photo by BASS Electric*)





Get in touch

Our office in Point Richmond, California, is conveniently located near Interstates 580 and 80 for easy access.

Architectural Services:

Andrew Butt, AIA, LEED AP BD+C

510.236.7435 **MAIN**

510.231.7507 **DIRECT**

andrew.butt@intres.com

Architectural Services:

Brant Fetter, AIA, CGBP

510.236.7435 **MAIN**

510.231.7509 **DIRECT**

brant.fetter@intres.com

Address:

117 Park Place

Richmond, California 94801

Interactive Resources' architects are licensed in CA, AZ, AR and NV.

Our structural engineers are licensed in AL, AZ, CA, CO, CT, DC, FL, GA, HI, IN, MA, MD, MN, NC, NE, NJ, NM, NV, OH, OR, PA, Puerto Rico, RI, TX, UT, VA, VT, WA



www.intres.com